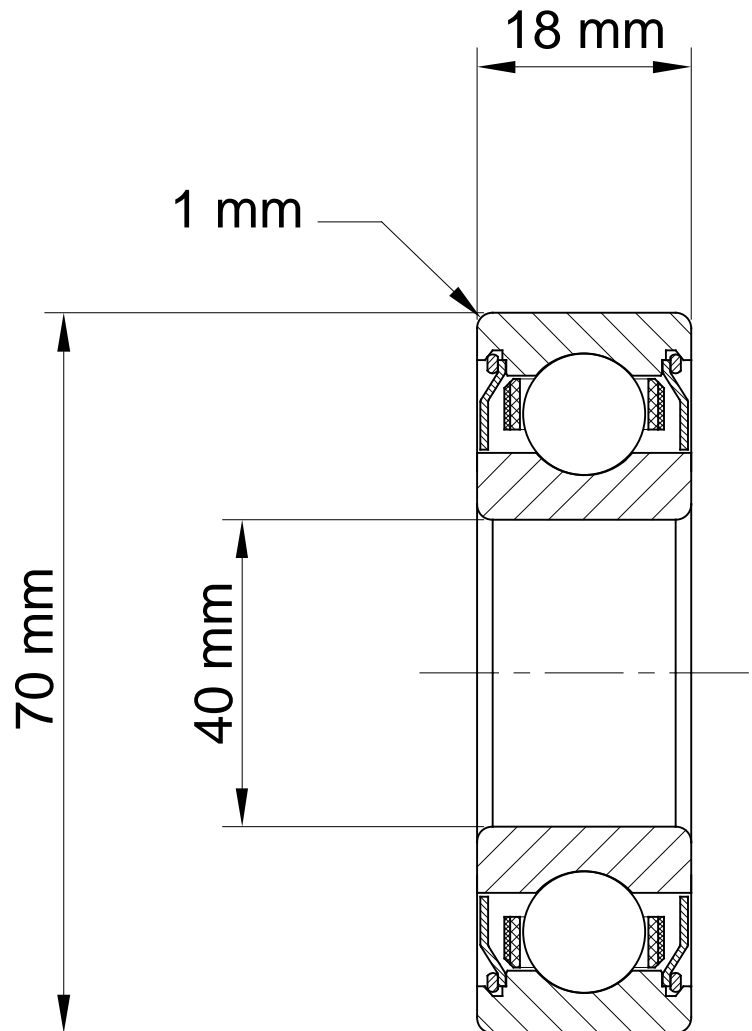


ST-FA-BE-208SS



High Speed Deep Groove Ball Bearing



ST-FA-BE-208SS

Tolerance Class

ABEC 7 GRADE

Dimensions

BORE (d): 39.994 - 40.000mm
 OUTER DIAMETER (D): 69.993 - 70.000mm
 WIDTH (B): 17.880 - 18.000mm
 MAXIMUM SHAFT R1 = 1.00mm MAX, 4 PLACES

Material

RINGS: 52100 CARBON CHROME
 BALLS: CERAMIC (Si3N4)
 CAGE: PHENOLIC/ALUMINUM
 CLOSURES: STAINLESS STEEL

Ball Complement

11

Ball Diameter

3/8"

Cage Type

TWO PIECE RIVETTED

Closures

SHIELDED BOTH SIDES

Radial Play/Contact Angle

0.015 - 0.020mm

Capacity

DYNAMIC: 14.8 N
 STATIC RADIAL: 11.0 N
 STATIC THRUST: 18.0 N
 20,000

Lubrication

KLUBERSPEED BF72-22

RPM